

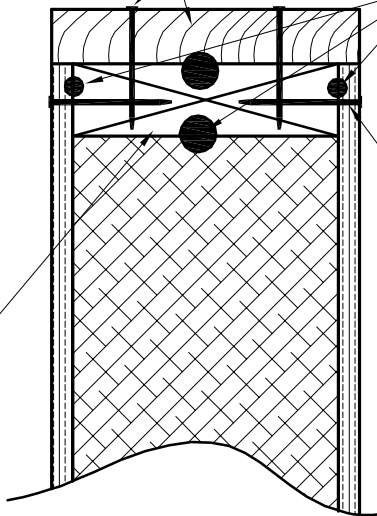
PREMIER CAP
STANDARD 2x LUMBER,
1 1/8" OSB, OR 1 1/8" OSL
(RIMBOARD) WHICH HAS
BEEN RIPPED TO OVERALL
WIDTH OF PANEL, MAY BE
USED TO INCREASE WALL
HEIGHT OR TO INCREASE
POINT LOADING CAPACITY.
SEE POINT LOAD CHART.

12d OR 16d
NAILS @ 12" O.C.
U.N.O.

PREMIER MASTIC
TYPICAL EACH
SIDE AND BOTTOM

8d NAILS @ 6" O.C.
OR EQUIVALENT
EACH SIDE. U.N.O.

FIELD INSTALL
PANEL TOP AND
BOTTOM PLATES



CAP PLATE

PREMIER BUILDING SYSTEMS

8-16-07