

# Pearl Izumi U.S.A Corporate Headquarters Louisville, CO

2014 SIPA Building Excellence Award Recipient



STRUCTURAL INSULATED PANELS

BY INSULFOAM A CARULISE Company



Premier SIPs construction reduced framing time and helped the facility to easily meet the 2012 Colorado energy requirements.



## Project Profile: Pearl Izumi Headquarters

The new Pearl Izumi North American headquarters is a high-performance space to explore new ideas and innovation. This designer and manufacturer of upscale biking, triathlon and running gear moved into its new environmentally friendly building in December of 2013. The 56,000 sq. ft. facility houses research and design, prototyping and testing, marketing, management and financial functions for the corporation.

The industrial styled building uses natural materials chosen to integrate the building into the natural landscape and the facility's Rocky Mountain views. The 56,000 sq. ft. building achieved dramatic energy savings by using 10-inch-thick SIP wall panels and 10-inch-thick SIP roof panels for an airtight building envelope.



[www.premiersips.com](http://www.premiersips.com)

# Pearl Izumi Headquarters Louisville, CO

The open plan for construction offers design efficiency and enables Pearl Izumi to take advantage of day lighting, solar orientation and natural ventilation strategies that helps create a comfortable work environment for this corporate work space.

Exposed SIPs lent perfectly to the building's industrial design that flows throughout the entire 56,000 sq. ft. facility.

## Commercial Projects Save Operating Costs with SIPs

**Economical to Operate:** Tight building envelope reduces heating and cooling costs by up to 60%, offering significant savings on operating costs as well as greatly reduced mechanical equipment needs.

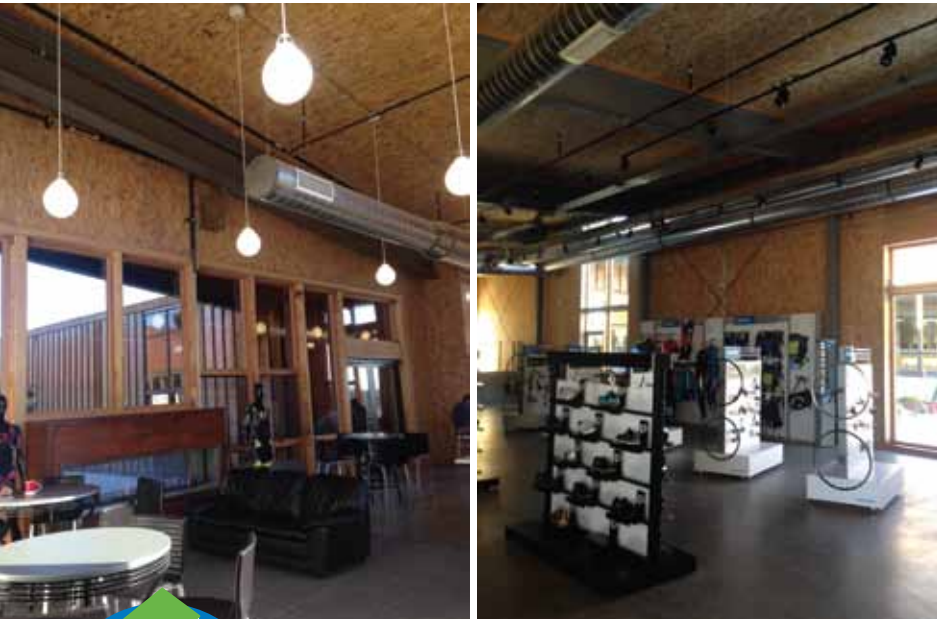
**Fast Installation:** Large, pre-cut structural panels allow building envelope to be erected 50% faster enabling businesses to open sooner.

**Healthy & Comfortable:** Better indoor air quality, and more comfortable operating environment, SIPs buildings stay cooler in the summer and warmer in the winter.

**Design Flexibility:** Virtually any Type V design can accommodate SIPs.

**Environmentally Responsible:** SIPs typically produce 30% less job-site waste than traditional construction and by nature of the materials used, reduce the burden on our natural resources

**LEED Points:** Up to 44 credits could be awarded for use of Premier SIPs in commercial new construction or major renovation.

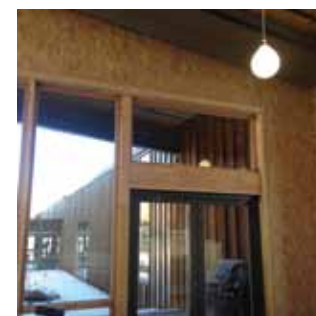


SIPs construction enabled the design of the building and the workspaces to be open, collaborative and grouped by division.



Premier SIPs Can Be Used in Variety of Projects

- Residential
- Multi Family Housing
- Commercial
- Education
- Native American



## Project Details

**Architect:** Arch 11 & ZGF Architects

**Contractor:** Haselden Construction

**Project Size:** 56,000 Sq. Ft., Single Story

**Premier SIPs Used:** 10" Walls, 10" Roof

