

## QUIET MULTI-FAMILY SPACES

Premier SIPs Pass Testing Requirements for Sound Transmission and Fire Resistance



Dual sound and fire performance make SIPs an ideal choice for town homes, condos, apartments and hotels, when fire safety and sound transmission are important.



Sound control is important in lodging structures, multi-family apartments, condominium complexes, as well as Senior Living Facilities or any building that includes dwelling units with shared walls. Shared walls can mean unwanted noise from the unit next door and shared corridors can also mean less privacy.



For newer or remodeled multi-family housing units, Building Codes throughout the United States require a measure of sound privacy between dwelling units. The International Building Code (IBC) specifies a minimum architectural design standard of privacy of 50 STC (Sound Transmission Class).

### THE SIPs SOLUTION

Testing by an independent laboratory confirms that Premier Structural Insulated Panels (SIPs) reduce sound transmission, for a quieter indoor environment. Certain wall assemblies using the panels achieve sound transmission class ratings (STC) of up to 58 and 59 - well above the STC 50 requirement for walls separating dwelling units. Notably, these assemblies are also ASTM E119 hourly fire-rated assemblies.



Premier SIPs provide builders and designers with energy efficiency, high STC ratings and hourly fire-rated assemblies in a framing system that the contractor can install very quickly. With today's construction labor shortages, Premier SIPs offers an exceptional system with fewer labor requirements than traditional framing products.

Nationwide Distribution • 800.275.7086 • [www.premiersips.com](http://www.premiersips.com)

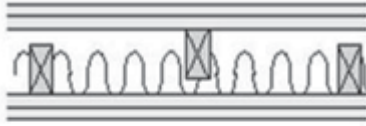


# QUIET MULTI-UNIT DWELLING SPACES

SIPs With High STC Ratings and Fire Resistance

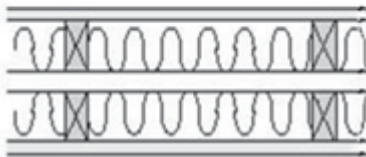
## WALL TYPES CURRENTLY USED TO ACHIEVE REQUIRED STC RATINGS

### STC 55



- Double 1/2" Type X gypsum wallboard both sides
- Two rows 2" x 4" studs 16" o.c. or 24" o.c. staggered
- Absorptive material one side

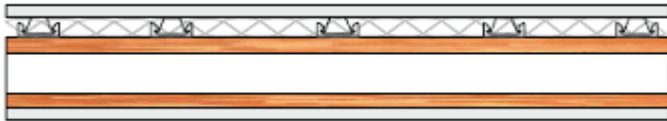
### STC 57



- 1/2" Type X gypsum wallboard both sides
- Two rows 2" x 4" studs 16" o.c. or 24" o.c. on common 2" x 6" plate set 1" apart
- Absorptive material both sides

## THE NEW FAST AND EFFICIENT SOUND WALL

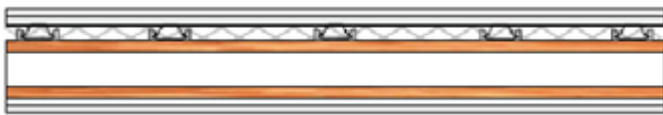
### STC 48 or STC 52



- 5/8" Type X gypsum wallboard both sides
- Premier SIP
- Proprietary sound clip with 2 1/2" batt insulation

## AND THE NEW FAST AND EFFICIENT SOUND WALL WITH AN HOURLY RATING

### STC 58 or STC 59



- Double 5/8" Type X gypsum wallboard both sides
- Premier SIP
- Proprietary sound clip with 2 1/2" batt insulation



It's a challenge to get a stick-framed structure to meet both sound transmission and fire resistance ratings, but with Premier SIPs it can be done quickly and cost effectively.

Nationwide Distribution

800.275.7086

[www.premiersips.com](http://www.premiersips.com)

